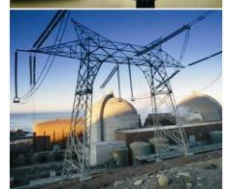


DNA3300 IP 4K Video Linux OS NVR Appliance 2 HDD, 1 x HDMI 8, 16, 32ch – 16 POE



DESCRIPTION

The DNA3300 Series is a LINUX OS based, Professional IP Management and Network Video Recording (NVR) Appliance System with 8, 16 or 32 IP Camera inputs, up to 16 POE, 320Mbps bandwidth and 12MP view, record resolution. ONVIF compliant H.265/H.264/MJPEG MP IP Cameras including Thermal and Explosive; 128 users may access and view system. Features include Quad Core CPU, 1 x HDMI, 2 HDD, Audio in/out, 4 Alarms in/2 Relays out, RS-232, RS-485 Data, 2 USB, 1 eSATA, 1 x 1000Mbps RJ-45 port and Motion Detection. With outstanding performance to cost benefits ratio, NVR Unit Management Server, PC Client, Web, Smart Phone Interface Software and ONVIF compliance, the DNA3300 Series are advanced solutions for commercial and industrial, IP video surveillance installations.



FEATURES

- * Professional IP NVR Appliance with Software Management and User Friendly GUI
- * High Performance Quad Core Microprocessor
- * H.265/H.264/MJPEG Decoding, 8MP Display
- * 8, 16, 32 (16 POE) Inputs; 2 HDD slots
- * 1 x HDMI(up to 3840x2160); 1 VGA Ports
- * Recording Modes including Manual, Alarm, Schedule, Motion Detection, Video Loss
- * Max Record 320 Mbps and 12MP IPC
- * 128 Access Users for View and Control
- * Advanced Search and Playback functions
- * RS-232 (Keyboard); RS-485 PTZ Controls
- * 1 x 1000Mbps RJ-45 Ethernet Port
- * Audio in/Audio out; 3 USB Ports
- * 4 Alarms Inputs and 2 Relay Outputs
- * Smart Phone: iPhone and Android
- * Compliance with CE, FCC, ROHS and ONVIF

APPLICATIONS

- * Homeland Security
- * Correctional Centers
- * Petrochemical Industry
- * Corporate and Banking
- * Casinos and Hospitality
- * Health Care Centers
- * Schools and Universities
- * Government and Military
- * Power Generating Plants
- * Traffic Surveillance (ITS)

ORDERING INFORMATION

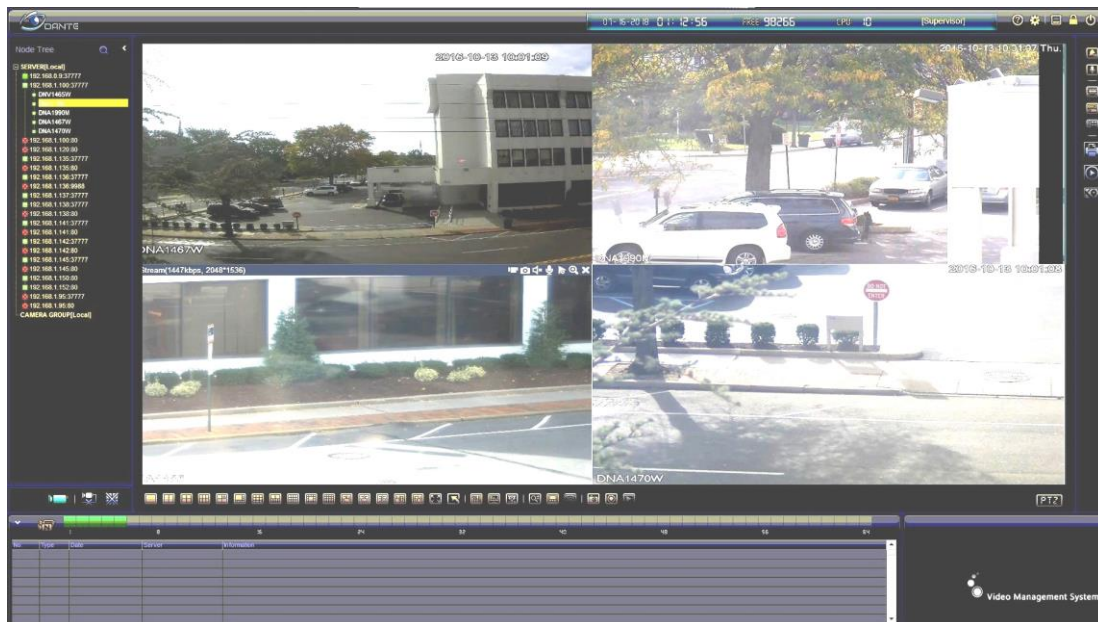
DNA3300-8	NVR Appliance 8 IP Video inputs, Audio in/out, Alarms in/out, 100-240VAC
DNA3300-16X	NVR Appliance 16 IP Video inputs, Audio in/out, Alarms in/out, 100-240VAC
DNA3300-32	NVR Appliance 32 IP Video inputs, Audio in/out, Alarms in/out, 100-240VAC

Mechanical, Electrical Specifications

Dimension (H x W X D): 53mmx375mmx327mm 2.0" (1U) x14.8"x12.9" (19" w/rackmount ears)
Weight: Net 5.8 lb (2.6 Kg) - no HDD



**DNA3300 IP 4K Video
Linux OS NVR Appliance
2 HDD, 1 x HDMI
8, 16, 32ch – 16 POE**



FEATURES OF NVR AND CLIENT SOFTWARE

- * Multi-Screen, Friendly, Graphic User Interface (GUI) Client software for up to 128 Access Users
- * Manage multiple Digital Video Recorders, Network Video Recorders and Devices
- * Features Status and Health Report log files of Devices
- * Connects to ONVIF compatible Network Camera Brands 12MP, 8MP, 5MP, 4MP, 3MP, 2MP; IP Encoders
- * Supports Smart Phone and Appliances: iPhone, iPad and Android
- * Features Management, Configuration, Reboot
- * Supports Administrator login rights for configuration and maintenance; Multiple Users with Passwords and Multiple user control modes with assigned rights such as live view only, or live and recorded view; PTZ controls
- * Features Video display Split as: first screen up, 16 on 16ch, 36 on 32ch; second screen up to 16ch
- * Device management such as add or delete, bidirectional talk, video monitoring project, layout configuration
- * Supports configuration of PTZ, bidirectional talk, camera settings, color adjustments
- * PTZ controls with Direction, Pan, Tilt, Zoom, Focus, Iris, Presets, Tours, and Patterns
- * Supports Live Monitoring from Snapshot and Local Record; Pre-Alarm Recording function
- * Supports Video Search and Playback from Local PC, DVRs, NVRs, or Storage Devices
- * Supports Video overlay as Camera Title, Time and Video Loss
- * Supports multiple scheduled methods to realize auto PC guard
- * Supports incoming bandwidth 320Mbps; up to 12MP playback resolution; Digital Zoom of Recorded Video;
- * Supports Camera Blank based on Time of Day, Alarms, Auto Notification, Scheduled Action
- * Connects to Digital Matrix Platform Displays Appliances for Video wall
- * Supports various types of Alarms including External, 396 Motion Detection Zones, Video Loss, Camera Masking, based on Time of Day, Date with Auto Notification and Scheduled action
- * Features Warning Sound or Message from Alarms
- * Features exporting the Alarm information to peripheral Devices for Extended Uses
- * Supports e-map for End User to view all device locations with CMS
- * Features unlimited number of Map Groups and 64 sub-map Layouts with JPEG and BMP with CMS

ENVIRONMENT

- * Client CPU requirement - 2.4GHz or higher; Memory 8GB or higher; Video Memory 2GB; WIN8, WIN10
- * Resolution Display 3840 x 1260 and lower (1920x1080 - 1080p)



www.dantesecurity.net

Lynbrook, NY USA

sales@dantesecurity.net