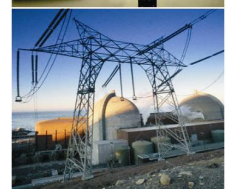


DNA3500 IP Video Linux OS NVR Appliance Enterprise Software 16, 32 Inputs



DESCRIPTION

The DNA3500 Series is a LINUX OS based, Enterprise IP Management and Network Video Recording (NVR) Appliance System with up to 32 IP Camera inputs and 12MP record and playback resolution. Compatible with Dante DNA Series MP IP Cameras, 20 simultaneous users may access, view and control system. Features include 2 x HDMI, 8 HDD (48TB) or 6 HDD and built-in CD/DVD-RW, Raid 0/1/5/6/10, Motion Detection, Audio in/out, 16 Alarms in/6 Relays out, RS-232, RS-485 Data, Electronic Mapping, 4 USB, 1 eSATA, 2 x 1000Mbps RJ-45 load balancing ports. With outstanding performance/cost benefits ratio, optional 2 power supplies and N+M hot standby, NVR Management Server, Client, Web, Smart Phone Interface Software and ONVIF compliance, the DNA3500 Series are advanced solutions for commercial and industrial, IP video surveillance installations.



FEATURES

- * LINUX real time OS Enterprise IP Video NVR Management with Client DVR like GUI
- * High Performance Dual Core Microprocessor
- * H.265/H.264/MJPEG/MPEG4 Decoding
- * 16, 32 IP inputs; up to 12MP Resolution
- * 2x HDMI (3840x2160) and VGA ports
- * 8 HDD or 6HDD and built-in CD/DVD-RW
- * Recording Modes including Manual, Alarm, Schedule, Motion Detection, Video Loss
- * Maximum incoming Bandwidth 320Mbps
- * 128 access Users; max 320Mbps record
- * Smart Phone: iPhone, Android, Windows
- * Integrated, Multi-layered Facility Maps
- * Advanced Search and Playback functions
- * RS-232 (Keyboard);RS-485 PTZ Controls
- * 2 x 10/100/1000Mbps RJ-45 Ethernet Port
- * Audio in/out; 4 USB, 1 eSATA USB Ports
- * 16 Alarms Input, 6 Relay Outputs
- * Compliance with CE, FCC and ROHS, ONVIF

APPLICATIONS

- * Homeland Security
- * Correctional Centers
- * Petrochemical Industry
- * Corporate and Banking
- * Casinos and Hospitality
- * Health Care Centers
- * Schools and Universities
- * Government and Military
- * Power Generating Plants

ORDERING INFORMATION

DNA3500-16W NVR Appliance 16 IP Video inputs, Audio in/out, Alarms in/out, 2 x 1000Mbps RJ-45

DNA3500-32W NVR Appliance 32 IP Video inputs, Audio in/out, Alarms in/out, 2 x 1000Mbps RJ-45

W = CD/DVD-RW

Mechanical, Electrical Specifications

Dimension (H x W X D): 95mmx440mmx454mm 3.5"(2U) x 17.3" x 18" (19" w/rackmount ears)

Weight not including H/D: Net 13.5 lbs. (6 Kg) - no HDD

Power Supply: 100-240VAC, 50/60Hz, 40W



www.dantesecurity.net

sales@dantesecurity.net

**DNA3500 IP Video
Linux OS NVR Appliance
Enterprise Software
16, 32 Inputs**



FEATURES OF CLIENT SOFTWARE PSS

- * Multi-Screen, Friendly, Graphic User Interface (GUI) Client software for up to 20 simultaneous Users
- * Manage multiple Digital Video Recorders, Network Video Recorders and Devices
- * Features Status and Health Report of Devices
- * Connects to IP Cameras, IP Encoders and Decoders
- * Supports Smart Phone and Appliances: iPhone, iPad, Android, Windows
- * Features Management, Configuration, Reboot
- * Supports Admin and Multiple Users with Login and Passwords and Individual Users Configurations
- * Features Video display Split as: full screen, 16ch=1/4/8/9/16, 32ch=1/4/8/9/16/25/32
- * Device management such as add, delete, bidirectional talk, video monitoring project, layout config.
- * Supports configuration of PTZ, bidirectional talk, camera settings, color adjustments
- * PTZ controls with Direction, Pan, Tilt, Zoom, Focus, Iris, Presets, Tours, Patterns
- * Supports Live Monitoring from Snapshot and Local Record
- * Supports Video Search and Playback from Local PC, DVRs, NVRs, or Storage Devices
- * Supports Video overlay as Camera Title, Time and Video Loss
- * Supports multiple scheduled methods to realize auto PC guard
- * Supports Digital Zoom of Recorded Video
- * Supports Camera Blank based on Time of Day, Alarms, Auto Notification, Scheduled Action
- * Connects to Decoders for Videowall and Virtual Matrix Displays
- * Supports various types of Alarms including External, Motion Detection Zones, Video Loss, Camera Masking, based on Time of Day, Date with Auto Notification and Scheduled action
- * Features Warning Sound or Message from Alarms
- * Features exporting the Alarm information to peripheral Devices for Extended Uses
- * Supports e-map for End User to view all device locations
- * Features unlimited number of Map Groups and 64 sub-map Layouts with JPEG and BMP

ENVIRONMENT

- * OS - Windows 2003/ Windows 7 / 8/ DirectX 9.0 or higher
- * Client CPU requirement - 2.4GHz or higher; Memory 8GB or higher; Video Memory 1GB
- * Resolution Display 1024 x 768 or higher (best with 1920x1080 - 1080p)

